



DATTA MEGHE

INSTITUTE OF HIGHER
EDUCATION & RESEARCH

(DEEMED TO BE UNIVERSITY)

LEARN. LEAD.

NATIONAL ADMISSIONS

TRANSFORM YOUR FUTURE REIMAGINE YOUR WORLD

Lead into a brighter tomorrow
with learning spirit



office: DMIHER (DU), Sawangi (Meghe),
Wardha 442107 Maharashtra, India
P: 07152-287701-06 | E: info@dmher.edu.in

Office (Off Campus): Datta Meghe Medical College, Wanadongri,
Hingna Road, Nagpur 440010 Maharashtra, India
E: deandmmc@dmher.edu.in

www.dmiher.edu.in



GATEWAY TO BUILDING BRIGHT CAREERS

Amidst sprawling greens,
and a deeply nurturing environment

125+ Acre Lush Green Campus



“FASTER, HIGHER, STRONGER - TOGETHER

is the motto of the Olympics that
we apply more broadly, to all
spheres of living...and at all times!”



“At **Datta Meghe Institute of Higher Education & Research**, a Deemed to be University (DMIHER, DU), we have a strong and focused commitment to help all our students to surge ahead.

All our plans, investments, and efforts are centred around our students, to keep them enthusiastic and ambitious, as they develop their skills, talents and knowledge. Students are gently, but constantly encouraged to reach higher, to learn...and lead!

We are proud of the institution that we have meticulously built. We have come a long way, in adding facilities and opportunities, for students to use as stepping stones, to grow 360° in developing as well-balanced professionals capable of grappling with the challenges of a fast- changing world.

We are not content to rest on our many milestones of achievement, but are constantly exploring new ideas, processes and systems to keep raising the benchmarks. We look forward to welcoming you as a student, and accelerating the growth of your capabilities and knowledge.”

Developing as well-balanced professionals capable of grappling with the challenges of a fast-changing world.

Hon'ble Shri Dattaji Meghe

Chancellor-DMIHER (DU)





DMIHER is a multidisciplinary university located in Sawangi Meghe, Wardha, which is 80 kms from Nagpur, and offers a very conducive environment for high quality education. With relentless drive and inspiration, the institute has grown from 100 medical students to over 5,000 students across 270 multi-disciplinary programs. Over the decades, the institute has diversified and set up full-fledged colleges in diverse fields, spanning beyond medical.

Datta Meghe Institute of Higher Education & Research was granted the status of 'Deemed University' by Ministry of Human Resource Development on 24th May, 2005. Away from the hustle and bustle of the city, this sprawling, green and peaceful campus is a self-sustaining complex, well-connected by road, rail and air (via Nagpur) to all major cities in India. **DMIHER (DU)**, recently, established its first off-campus college at Nagpur, the second capital of Maharashtra, in 2019.

1 FULL-FLEDGED CAMPUS
125-acre lush green campus, with all facilities, connected through multiple transport modes

An icon of a large building with a flag on top, surrounded by trees, representing a full-fledged campus.

2 EXPERT FACULTY
Highly qualified and experienced faculty, in sync with industry standards

An icon of a person standing next to a whiteboard with lines of text, representing an expert faculty member.

3 WELL-APPOINTED FACILITIES
Sprawling campus with many colleges onsite. Comprehensive learning & recreational facilities

An icon showing a park bench, a swimming pool with a swimmer, and trees, representing well-appointed facilities.

4 RESEARCH FOCUS
Multi-disciplinary focus on research with a proven track record of patents, copyrights and published research papers

An icon showing a magnifying glass over a book and a medal, representing research focus.

5 DIVERSE CULTURAL MILIEU
Attracts students and faculty from all over the country - and from 12 countries

An icon showing a globe with three people silhouettes, representing a diverse cultural milieu.

5

KEY REASONS TO UNLOCK YOUR FUTURE AT DMIHER DMIHER - AN EASY CHOICE!

As a student, you have to constantly make choices and decisions, as you navigate the tricky route from being a student to being gainfully and meaningfully employed. DMIHER has made your life a little easier by putting together a 'learning and living experience' that has the best of everything. We have taken out the guess work and the task of figuring out the invisible, by replacing it with a quiet, but eloquent reassurance of quality and value.

DATTA MEGHE Tireless. Trailblazer.

Shri. Dattaji Meghe, the Founder and Chancellor of **Datta Meghe Institute of Higher Education & Research**, has played an active role in public life for more than 40 years. He has represented the people of Maharashtra in the Lok Sabha for three consecutive terms and was also a member of the Rajya Sabha.

Education and Health, he strongly believes, are the twin pillars that can truly transform the country. This "son of the soil" made a humble beginning, in the fond memory of his beloved mother and started a medical college under the then Shrimati Radhikabai Meghe Memorial Medical Trust, 30 years ago.

Inspired by his telescopic vision and

committed efforts, the Institution has widened its horizons, adding new courses/programs and expanding its state-of-the-art infrastructure to keep pace with the rapidly evolving times. Apart from the DMIHER (DU), he has played a pivotal role in developing a chain of CBSE schools, engineering colleges, banks, spinning mills and IT firms. The entire spectrum of KG to PG was completed under his leadership, enabling the creation of new benchmarks of quality.



DMIHER SOLID FOUNDATIONS



DMIHER is a Deemed University with a large roster of affiliated colleges that offer programs across a wide spectrum of disciplines. They include:

- **Jawaharlal Nehru Medical College**
- **Datta Meghe Medical College** (*Off Campus Centre at Nagpur*)
- **Sharad Pawar Dental College & Hospital**
- **Mahatma Gandhi Ayurveda College Hospital & Research Centre**
- **Smt. Radhikabai Meghe Memorial College of Nursing**
- **Ravi Nair Physiotherapy College**
- **Datta Meghe College of Pharmacy**
- **School of Allied Health Sciences**
- **Faculty of Engineering & Technology**
- **School of Allied Sciences**
 - *Faculty of Commerce & Management*
 - *Faculty of Science & Technology*
 - *Faculty of Humanities & Liberal Arts*
- **Centre for Distance & Online Education**
- **School of Epidemiology & Public Health**
- **SMCON**

GUIDING LIGHT & PILLAR OF SUPPORT

DMIHER has to its credit and the student's advantage an outstanding and exceptional team of faculty. Drawn from across the length and breadth of India, the faculty is not only highly qualified (many with international degrees), but well experienced. They have mastered the fine art and science of simplifying and presenting concepts with great skill. Highly motivated and enthusiastic, the faculty plays a critical role, not only in imparting knowledge, but forming the students.

Keenly aware of the high industry standards, the faculty inspire the students to give their best in the classrooms and on the field. They share critical insights to enable students to gauge themselves so that they can constantly improve and align themselves for growth and success. Students are mentored to pursue their goals and expectations with great prudence and diligence. The faculty also play an invaluable role in course-correcting some students, to bring out the best in them.

Active in non-academic circles, the highly committed faculty, help form the character of the students by instilling great human values and passion to reach out in service of humanity. The faculty handhold the students and keep urging them on, so that they reach higher to be the best that they can be. Students far away from home, especially the international students are given special attention and orientation programs to help them integrate seamlessly with the student community.



INITIATIVES FOR INVOLVED, INNOVATIVE APPROACHES TO SHAPE A LIFE-LEARNING APPROACH

In keeping with today's evolving world and changing techniques, DMIHER has transcended the ordinary, to bring new avenues of learning for the students and faculty. Ultra-modern technologies have been harnessed to give students a refreshing, practical and more experiential method of learning. Here are some of the initiatives...

• Museums

DMIHER has set up museums at the Wanadongri & Wardha Campuses which focus on conceptual understanding and self-learning. These museums have a wide array of wall-mounted charts and labs where students can interact with the exhibit or students to grasp the deeper insights and finer aspects of a subject. What's remarkable is that the facilities leverage new age technologies like Virtual and Augmented Reality to depict more comprehensively the knowledge from the archives to the current status of healthcare services.



• Simulation Labs

For the sphere of medical science there are labs at Wardha and Wanadongiri; and for dental science there is one at Wardha. These skill-development labs have realistic mannequins with a range of functions - pulse, BP and heart-rate. What's special is that they simulate real-life situations like pregnancy, heart attack and various operations; enabling students to get a hands-on feel. There is also high-end Haptic Feedback technology with 5 modules and high-fidelity CAD/CAM software for teaching the students in dentistry.



• Siddharth Gupta Memorial Hospital

Located at the Sawangi campus, this is the first cancer hospital in the region with ultra-modern, multi-modality diagnostic and therapeutic facilities with state-of-the-art equipment. This facility offers first hand exposure to students and faculty, to diagnose and treat the many challenging forms of cancer.



BENEFIT FROM THE MOST-COVETED COLLABORATIONS GLOBALLY

Brighter minds illuminate the path ahead...

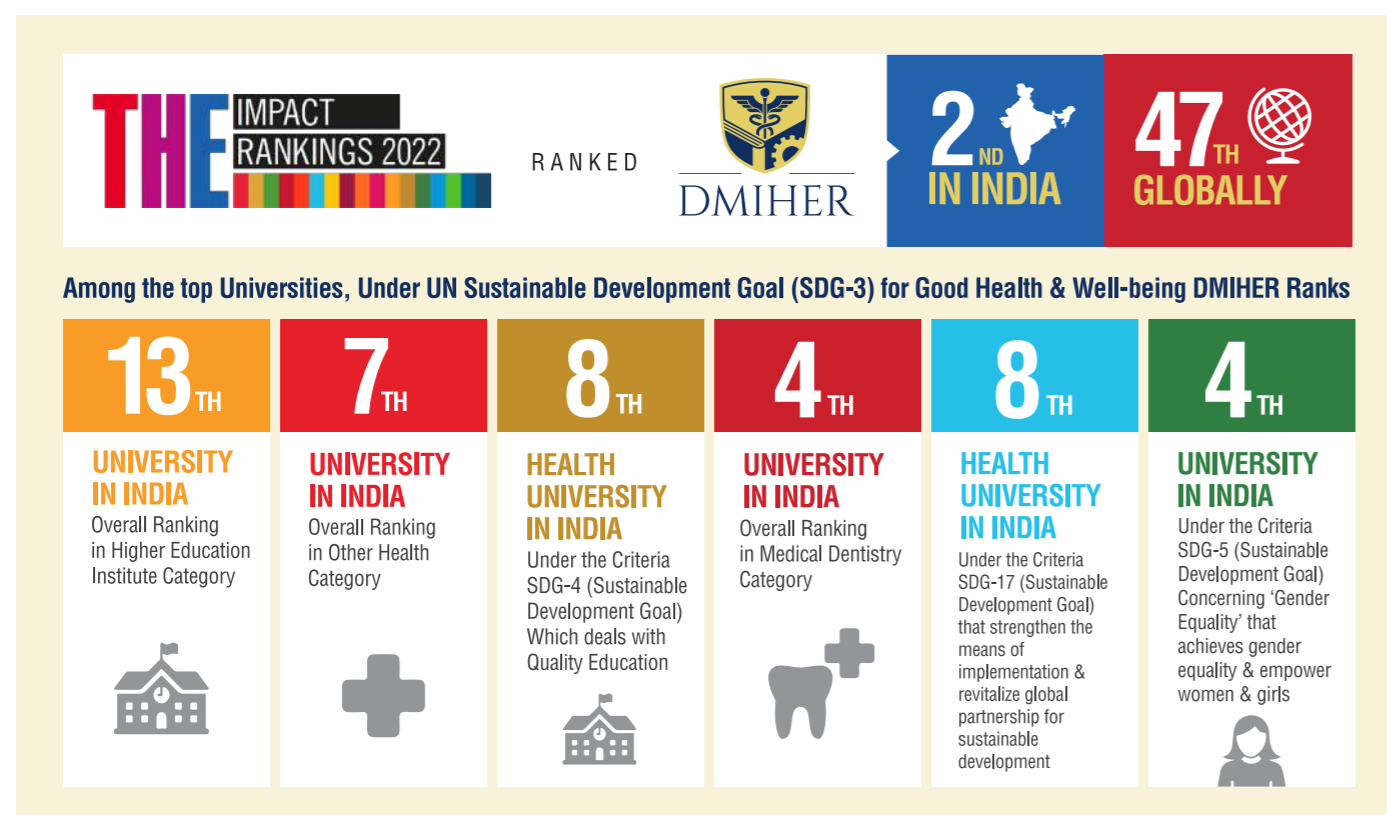
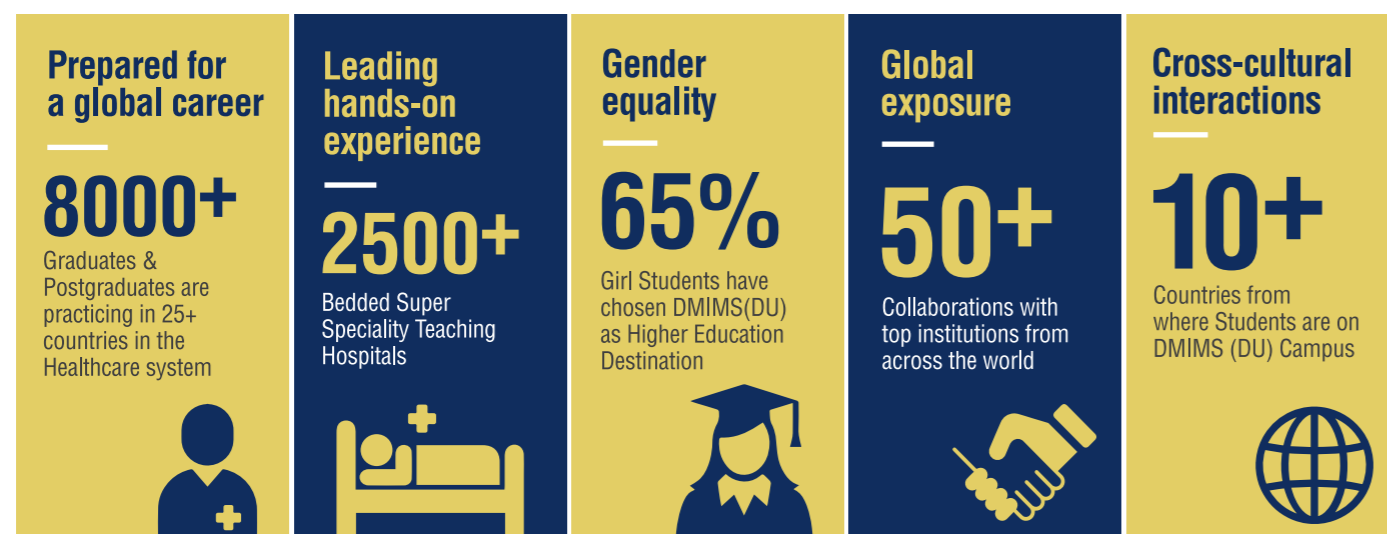
DMIHER, DU strongly believes that it is through active collaboration that the students, faculty and the university will grow and gain greater recognition. In this direction, it has built and reinforced relationships with a number of highly renowned institutions, that include:

- Harvard University, USA
- Michigan State University, USA
- Liverpool John Moore University
- Padova University, Italy
- University of Sydney, Australia
- Chester University, UK
- California University, USA
- WHO, Switzerland
- RAK Medical & Health Sciences, UAE
- John Hopkins University, USA
- Morumbi University, Brazil
- University of Sheffield, UK
- Indian Council of Medical Research, India
- Tata Institute of Social Sciences, India
- Indian Institute of Technology Bombay, and many more...



A COMPLETE ECOSYSTEM TO PREPARE YOU FOR LEAP INTO THE FUTURE

DMIHER: A Holistic Experience



CO-LEARNING & SELF-GROWTH: CULTURALLY VIBRANT LEARNING ENVIRONMENTS

The campus has a rich array of facilities to foster the imparting and gaining of knowledge in the best possible contemporary way. In addition, there are numerous facilities for students and faculty to interact on a level beyond academics.

With students from different corners of India and the world, there are myriad possibilities and occasions to demonstrate and exhibit their skills and culture; enabling the bonding and blossoming of healthy relationships and peer groups. Students have ample opportunity to pick up language, cross-discipline and soft skills that are always an invaluable asset in careers and life.



- Literary Society
- Annual Student Festival & NSS Activities
- Auditorium
- Food Court
- Shopping Centre
- Bank Extensions & ATM
- Herbal Gardens
- Photo Studios
- Post Office & Courier Services
- Separate Hostels for Boys & Girls
- Well-furnished Guest House
- Animal House

A COMPLETE ENVIRON DESIGNED FOR LEARNING...AND LEADING THE WAY.

The campus has been thoughtfully created, to be in harmony with nature and open spaces, where youth can get together and stretch mind and muscle in a healthy spirit of competition.



- **Central Library**
- **Reading Rooms**
- **Digital Library**
- **Journal Centres**
- **High-end Lecture Halls**
- **Virtual Learning & Skill Labs**
- **Research House**
- **Student Support & Guidance Clinics**
- **Simulation Learning Equipment**
- **Computing and Internet Hub**
- **Sports Facilities**
- **Well Equipped Gym**
- **Museum**
- **Swimming pool**

MILESTONES OF PROGRESS

DMIHER has journeyed successfully, moving steadily ahead, crossing many milestones of achievement.



- DMIHER granted status of Deemed University by UGC on 24th May 2005
- Conferred 'A' Grade status by Ministry of HRD, GOI in May 2013
- Placed in Category 1 of Deemed Universities as per UGC for grant of graded autonomy regulations 2018
- Undergone 3 cycles on NAAC reaccreditation, with the highest grade in all cycles
- In its 5th cycle of participation, the University is ranked 92nd in Overall category, 54th in University category, 24th in Medical and 11th among Dental colleges in NIRF Rankings, 2022
- Ranked in band "Excellent" of ARIIA rankings
- Featured in Times Impact Rankings for UN's Sustainable Development Goals 3, 4, 5 & 17. It ranked 47th in the world and 2nd in the country in SGD 3
- Bagged Diamond category in QS I Gauge and QS Medical Subject Ratings and is certified in QS Advanced E LEAD
- Numerous international and national recognitions, awards and collaborations in research, community service and faculty development
- Sizeable number of granted patents and high impact research publications, including the most prestigious Dr. B.C. Roy Award for research



COMMITTED TO BE WITH YOU, ALL THROUGH THE WAY

Be it careers, internships, fellowship programmes globally, research programmes or taking the next steps in the student's future path, DMIHER has set up this centre to assist you in successfully navigating the tricky and complex process with ease and confidence.

As a student, you will have several opportunities to interact with industry leaders and hone your communication skills.

INDUSTRY-INSTITUTE INTERACTION
CCE liaises with various companies to facilitate training, certified programs and live projects. The centre also works to ensure the best possible placement opportunity, by organizing relevant guest lecturers/seminars/interactive sessions.

RECRUITMENT TRAINING
CCE extends comprehensive training to every student by professionals, to ensure the students meet industry requirements and company standards.

PLACEMENTS
From finding and converting leads, to taking care of the placement process, end-to-end, CCE works tirelessly in placing students in reputed organizations.

ENTREPRENEURSHIP DEVELOPMENT
CCE provides vital information, encouragement, and guidance to the students, to enable them to become successful entrepreneurs.

MOU
CCE has played a pivotal role in the signing of MOUs between many industrial chambers/ organizations and the university, to facilitate internships, projects and placements.

RECRUITERS AND PARTNERS



AMONGST INDIA'S MOST VIBRANT RESEARCH ECOSYSTEMS

Leading research presentations, global collaborations, peer-reviewed articles, patents and incubations are today the cornerstone of quality learning ecosystem. DMIHER goes the extra mile in ensuring its students and faculty, get as many opportunities to engage in research. These projects stimulate creative thinking skills and provide invaluable lessons in managing on-the-job challenges.

1 **SOUTH ASIA INFANT FEEDING RESEARCH**
Network (SAIFRN) Liverpool John Moores University, Bournemouth University, Oxford University UK, DMIHER India, Nepal Green Tara, BRAC Bangladesh, Nigeria

2 **ICMR**
Amongst the highest number of ICMR STS (**102**) & PG Thesis (**42**) grant support in last 5 years.

3 **CREATIVE & MOTIVATED TALENT**
537+ Full time faculty
795+ PhD scholars
48+ Fellowship

4 **INFRASTRUCTURE & FINANCIAL RESOURCES EXTRAMURAL FUNDING**
Of INR **35.78 CR**
30 ongoing projects

5 **INTER DISCIPLINARY RESEARCH INDIAN SYSTEM OF MEDICINE**
More than **70** patents granted & **650+** copyrights registered

6 **GRANTS FROM REPUTED AGENCIES**
WHO SEARO, Grand Challenge Canada, SERB, DST, ICMR, etc.

INCUBATION CENTRES

DMIHER is the base for several incubation centres where great ideas are translated into reality. These centres are perfect to study the feasibility of promising ideas. Prototypes and scale models are created and are run through extensive tests in real and simulated conditions, to gauge capacities and limits.

